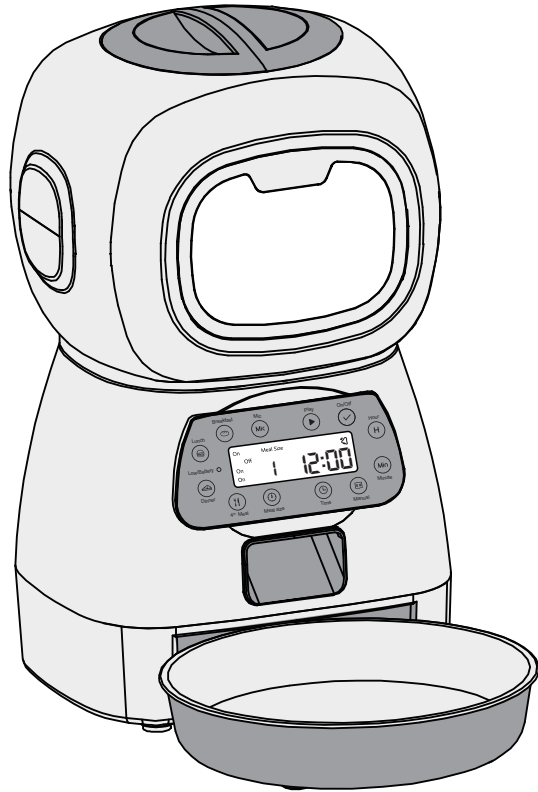


# ELF AUTOMATIC PET FEEDER



# Features of Automatic Pet Feeder

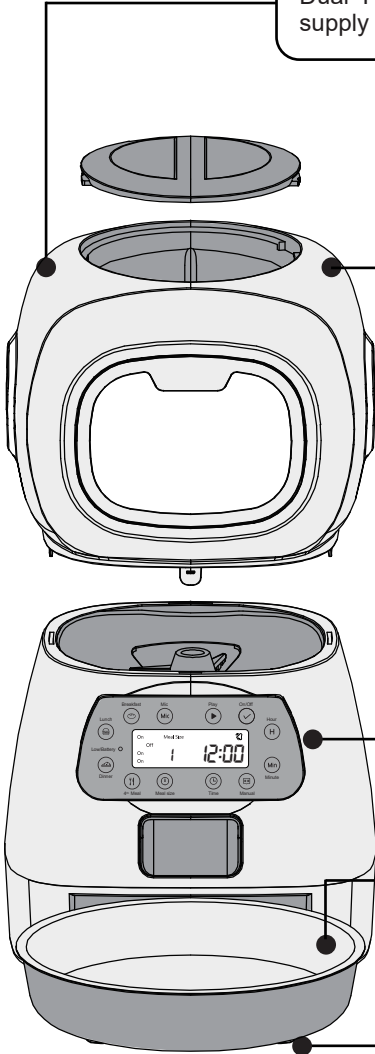
Build in high grade ABS resin.  
Dual Power supply: external power supply and battery mode.

Detachable food tank which is easy to clean.

Special button protection design, your feeding schedules won't be changed even if your pets accidentally touch it. User-friendly design makes it easy to set up, voice record function helps you care your pets in anytime.

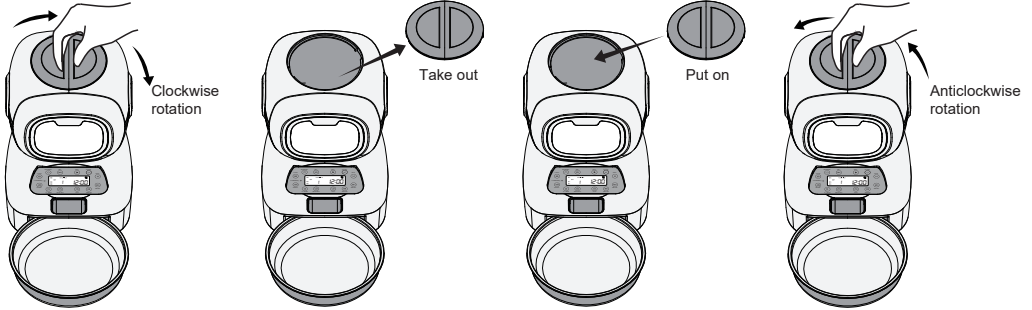
With accurate dispense, the feeder can keep your pets in good health, and the stainless steel food tray is also easy to clean.

The base is Stable and anti-skidding which can better protect your pets.



# Assemble and Use

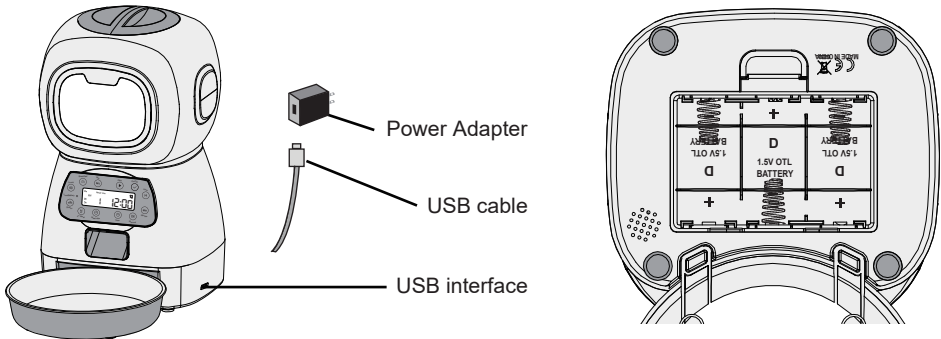
- 1 Remove / assemble bucket lid and grain bucket as shown.



Take out grain barrel

Put in grain barrel

- 2 Install D size battery\*3.



- 3 Set meal time and meal portions.

## Panel Instruction



# Setting Guide

## 1 Initial Setting:

- Please confirm that you have switched on.
- Long press the "Manual" button, the feeder would rotate by one grid.
- Repeat the instruction above for 3 times; the feeder is normal if it rotates by one grid each time.

## 2 Set Current Time:

- Press and hold the "Time" button, meanwhile, press the "Hour" button to set the hour time.
- Press and hold the "Time" button, meanwhile, press the "Minute" button to set the minute time.

## 3 Set Meal Time and Meal Portion:

- Press and hold the "Breakfast" button, meanwhile, press the "On/Off" button twice to set whether to feed breakfast. The "On" beside the "breakfast" button indicates to feed, and the "Off" indicates not to feed.
- Press the "Breakfast" button, meanwhile, press the "Meal Size" button to set the breakfast feeding quantity. "1" means to rotate one grid (about 5g), and you can set at most 20 portions (about 100g).
- Press the "Breakfast" button, meanwhile, press the "Hour" button to set the hour of breakfast; Press the "Breakfast" button, meanwhile, press the "Minute" button to set the minute of breakfast.

## 4 Set Lunch, Supper, and the Forth Meal Time:

Please refer to the above instructions, press the "Lunch-/Supper/Meal 4<sup>th</sup>" button, meanwhile, press the corresponding button to set lunch, supper, and the fourth meal.

## 5 Record and Play:

Long press and hold the "Mic" button until you have finished recording. The indicator light will turn red, which indicates to start voice recording. A "🔊" signal will show on the screen when the voice recording is completed. You can record about 10 seconds and press the "Play" button to play what you recorded.

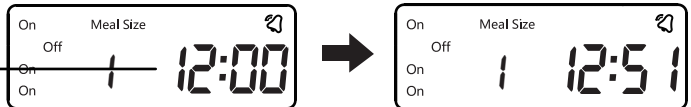
# Detailed Settings and Descriptions

## 1 Set Current Time:

The factory time when first power on is 12:00 AM.  
For example, the current time is 21:51.

- Long press the "time" button, meanwhile, press the "Hour" button until 21 is displayed on the hour position;
- Long press the "time" button, meanwhile, press the "Minute" button until 51 is displayed on the minute position.

The current time is shown while no setting operation.

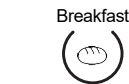


## 2 Check and set breakfast time and portions:

To Check the breakfast time and portions: Please long press the "Breakfast" button. The time on the screen will shift from the current time to the breakfast time and portions. Product default breakfast time is 8:00 am, as shown below.

The "Meal Size" indicates the breakfast portions, "1" means dispense one portion. The accurate volume of one portion is based on the different size of your pets food (You can set at most 20 portions with 5g per portion).

The "On/Off" indicates whether to have breakfast or not.



Time here shows the breakfast time.

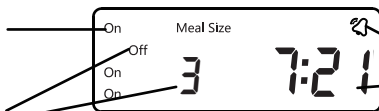
### Breakfast Time and Portions Setting :

No change is required if the preset value of breakfast matches your pet well. To make any setting changes, the operations are as follow:( For example, to change the portions “Meal Size” to 3, “Meal Time” to 07:21)

- a) Long press and hold the "Breakfast" button, meanwhile, press the “On/Off” button twice to set whether to set breakfast. The "On" beside the breakfast button indicates to feed, and the "Off" indicates not to feed.
- b) Press the "Breakfast" button, meanwhile, press the "Meal Size" button to set the breakfast portions to 3.
- c) Press the "Breakfast" button, meanwhile, press the “Hour” button to set the hour of breakfast time to 7:00; Press the "Breakfast" button, meanwhile, press the “Minute” button to set the minute of breakfast time to 21.

When “On” shows on the top left corner, indicating to feed breakfast.

When “Meal Size” shows 3, it indicates the portions of breakfast is 3.



It shows the “Meal Time” for breakfast.  
The time is 07:21 AM

### 3 Check and Set Lunch Time and Portions:

Long press and hold the "Lunch" button. The time on the screen will shift from the current time to the lunch time and portions.

Product default value: No lunch setting, namely, “Off” is on the lunch position.

“Off” indicates no lunch setting.



### Check and set lunch time and portions:

In case of any changes, such as changing to activate the lunch setting, please press the “Lunch” button, meanwhile, press the “On/Off” button to shift from “Off” to “On.”

The preset value of “Meal Size” is 1, you could press the “Lunch” button, meanwhile, press the “Meal Size” button to make the changes.

The preset value of “Meal Time” is 12:00; you could press the “Lunch” button, meanwhile, press the “Hour” button or “Minute” button to make changes on the feeding time.

### 4 Check and Set Time and Portions for Dinner and the Fourth Meal:

Press and hold the “Dinner” button. The time on the screen will shift from the current time to the dinner time and portion.

Product default value: Feeding portion is 1; Feeding time: 18:30, as shown below. The setting method follows the instruction above.

“On” shows on the third line, indicating dinner feeding.



### Check the time and portions of the 4<sup>th</sup> Meal :

Press and hold the “4<sup>th</sup> Meal” button. The time on the screen will shift from the current time to the 4th Meal time and portions.

Product default value: Feeding time: 22:00, as shown below The setting method follows the instruction above.

“On” shows on the left bottom corner, indicating 4<sup>th</sup> Meal feeding.

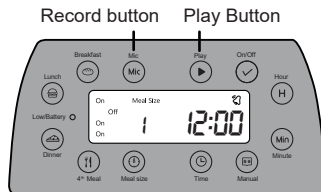


- 5 **Record and Play Setting:** To record a voice to remind your pet for a meal, you could record your voice less than 10 seconds. For example, to record "Time for a meal, Poppy," the instruction is as follows:

**Start Recording:**

- a) Long press and hold the "Mic" button until the indicator is on. (about 2 seconds)
- b) Speak loudly to the microphone "Time for meal, Poppy"
- c) let go when you complete the recording, record signal shows on the right top corner of the screen.

The feeder will play your voice recording three times for each meal to remind your pet.



**Cancel the recording:** Long press the "Play" button until the record signal is gone.

**Play:** Press the "Play" button to check what you have recorded.

- 6 **Instant Feeding:** To active instant feeding function, you may long-press the "Manual" button, and the feeder will rotate by one grid.

- a) There is a Low Battery indicator on the right side of the control panel. When you plan to go out for a business trip, please make sure to check whether the Low Battery indicator is on. In case of lighting or flashing during discharging or sounding, please replace the battery in time to prevent starvation.
- b) Do not put your fingers into the feeder at any time.
- c) This feeder uses D size battery \*3 (Alkaline batteries work more than one year under regular use). Note: Please dispose of the used batteries according to national regulations (pay attention to environmental protection). If you do not use the feeder for a long time, please remove the battery to prevent the electrolyte from flowing out.
- d) Please do not fill semi-dry or wet pet food into the feeder; this product is only applicable for dry pet food.
- e) Please contact the distributor or manufacturer for any questions.

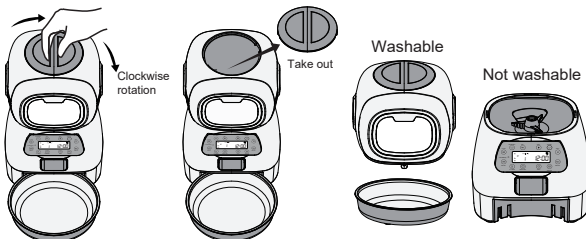
## Frequent Questions and Answers

- 1 **What's the problem if my feeder dispenses inaccurately or the display screen is unclear or my feeder stop working?**

Such problems occurring after a period of usage are mostly caused by low battery power. Please replace the new alkaline D size battery.

- 2 **How to clean the feeder?**

This product cannot be placed outdoors or exposed to the rain. Please use a wet cloth to clean it and prevent water from entering the feeder. If you need to open the food tank, please pull out the head of the robot with strength. The food tank and food bowl can be washed by water.



- 3 **How do I check the portions I set?**

Press the breakfast/Lunch/Supper/Meal 4th button to check the portions you have set.

**Warm Tip: This feeder is mainly aimed at the following pets.**

The Meal Size is about 5g per portion. You may set the Meal Size to 1-20 portions according to your pet. This feeder is suitable for small and medium size pets. For example, poodle, Pomeranian, Shepherd, Bichons Frises, Cats, etc